

# In Camera

*The Newsletter of the Hawkesbury Camera Club Inc.*

"I think we consider too much the luck of the early bird and not enough the bad luck of the early worm." Franklin D. Roosevelt.

Welcome to July.

The year is whizzing by and the challenges are heating up.

Personally I am not able to report on too much from this last month as I have been away in the warm waters of Palau diving. I hope that I have a few good shots to show around shortly but as always when you get home and look at them closely you have that disappointed blurry image or cut off in the wrong spot shot – and it just costs too much to go back and do it again!

The committee will be meeting on the 10<sup>th</sup> July so if you have any issues that you would like raised or looked into, please let me know via email – [president@hawkesburycameraclub.com.au](mailto:president@hawkesburycameraclub.com.au) or [kim@aquaticvista.com](mailto:kim@aquaticvista.com) and I can take that to the meeting.

Coming up on Wednesday 4 July we have our own John Hughes talking about Portraiture which is a lead up to our annual Geoff Pfister Memorial Annual Portraiture Award competition on the 15 August.

Our competition topic this month is "Just Rocks". Don't forget to check out the program for further information.

I look forward to see you all at the next meeting and hope that you can drag yourself away from the origin game.....:)

Regards

Kim Nemetz

President.



## OFFICE BEARERS

<b>President:</b>	Kim Nemetz 0410571107
<b>Vice President:</b>	Marian Paap 0402116670
<b>Secretary:</b>	Doug Carbery
<b>Treasurer:</b>	Ian Cambourne 45775148
<b>Comp Managers:</b>	Kerry Harris Alan Sadlier
<b>Publicity Officer:</b>	Sue Evans
<b>Activities Co-Ordinator</b>	Jenny Aquilina 0410032372
<b>Newsletter Editor:</b>	Alan Aldrich 96274225

## COMING UP

- JULY 4** Portraiture – John Hughes  
**JULY 11** Digital  
**JULY 18** Competition – Just Rocks

**Get to know Club members –  
Nicoline Kronast and Pete Burford**

1. **How long have you been a member of HCC?**

**NK: 12 months**

**PB: 18 + years**

2. **What is your favourite subject to photograph?**

**NK: Sports – soccer, kids rugby league, an some NRL games**

**PB: Landscape**

3. **Where is your favourite place to photograph in Australia and why?**

**NK: Central Australia – the colours of the centre**

**PB: Outback Australia for the changing moods and colours**

4. **Black and White or colour?**

**NK: Mostly colour – would love to try and master Black & White – also wonderful as well as the vastness of the landscape**  
**PB: Both**

5. **If you could go to just one country in the world for a photographic vacation (no expense spared), where would it be and why?**

**NK: Antarctic – vastness, wildlife, harsh landscape**  
**PB: Antarctic again as I now have better equipment**

6. What camera(s) do you currently 'shoot' with?

**NK:** Canon 400D, Nokia N8, Canon 5D Mkii  
**PB:** Nikons F70, 2xF80, D300, D7000

7. If you had an unlimited budget what camera/lens would you buy?

**NK:** Canon L 100-500mm zoom  
**PB:** I have enough!

8. Are you a fan of post production editing or not?

**NK:** Love it! I believe your image needs to be the best it can be before editing  
**PB:** .....NOT

9. What is your favourite F stop?

**NK:** Depends on the photography, Landscapes – f8-22; Sports to f8  
**PB:** One that suits the subject

10. When you're not at work and not out photographing, what will we find you doing?

**NK:** Many things! I ride horses, play at training for triathlons (swimming, running, cycling), reading gardening  
**PB:** Planning somewhere to photograph

July 2012

I was singing a song in my head recently "so I'll continue to continue to pretend my life will never end and flowers never bend with the rainfall" ... as I was picking some jonquils

from the garden. It had been raining and they had bent over to the ground, the rain had made them top heavy. I arranged the bunch in a new vase. It has pictures of blue tulips on it.

I admired them and when the sun shone through the window in the morning I felt motivated to photograph them. My camera was nearby so I placed the vase strategically on the table to allow the flowers to catch the light. I noticed the shadow they cast against the chair and I experimented with the shadows as an interesting background.

Eventually I went to the other side to make full use of the backlighting which made the petals almost transparent. I chose a narrow depth of field to blur the background of more jonquils. Some photos featured the vase in focus and others selectively focused on the flowers. I gradually got closer and closer to the flowers, concentrating on just one or two blooms, and noticed a few imperfections in some of the petals.

I started reorganizing the casual arrangement to obscure the blemishes. I flicked the macro switch on the lens to get in even closer, and took some close-up shots. I was now concentrating on taking the perfect photo of the perfect flower. I was remembering Neville Biddle's beautiful photo of a single snowdrop from a few years ago.

My aim in photographing the flowers changed in a short time from a shot to remember the jonquils from my garden, randomly displayed in my new vase, to being highly critical of small details and using all my technical knowledge and artistic composition sensitivities to create a perfect photo of a humble jonquil. Spot meter, macro switch, +/- exposure to obtain correct metering, f/stop to soften background, checking highlights to make sure all details were recorded.

In the end I was happy with the photos, including the less than perfect ones. I will remember the jonquils I picked from my garden.

Josephine Blue

### NEXT MONTH

**AUG 1** Guest Presenter – TBC

**AUG 8** Digital

**AUG 15** Competition – Geoff Pfister Memorial Award for Portraiture.

Dear Members,

Please find some interesting items that have been sent through to the club below. Please take the time to scroll down. Regards Kim



## \$5000 cash First Prize

[www.fremantleportraitprize.org.au](http://www.fremantleportraitprize.org.au)

The Fremantle Portrait Prize seeks entries from Portrait photographers worldwide to enter their finest images of people from home and abroad.

The Fremantle Portrait Prize aims to become Western Australia's most prestigious and ethical photographic award.

Supported by the City of Fremantle, with Ken Duncan as the patron, and chaired by Emeritus Professor Lawrie Beilin AO

the exhibition will be staged at The Moores Building Contemporary Art Gallery in Fremantle.

The Fremantle Portrait Prize is *entirely non-profit with all proceeds going to the Arthritis and Osteoporosis Foundation in WA.*

For information and entry visit: <http://www.fremantleportraitprize.org.au/>

Entries close 1 August 2012

Dale Neill

@@@@@

### CAMELLIA SHOW

Saturday 14<sup>th</sup> and Sunday 15<sup>th</sup> July, 2012. Camellia Show at Ravenswood School for Girls, Henry St, Gordon - open 1.30 to 4.30pm on Saturday, and 10am to 4pm on Sunday. Admission is \$5, afternoon tea and refreshments are available, and plants will be for sale.

There will be over a thousand blooms on display. The colours are every shade of pink and red, from the palest pink of 'Desire' to the dark red of 'Black Opal'. There will also be some of the yellow camellias, and the purple of 'Grape Soda'.

Members of the NSW Camellia Research Society will be on hand to help with information about camellias. Bring your blooms for identification or help with problems.

This year, there is also a **Photography Competition**, and there will be displays of Sogetsu Ikebana.

Contact us at [nswcamellias@hotmail.com](mailto:nswcamellias@hotmail.com), check out the website [www.camelliasnsw.org](http://www.camelliasnsw.org) or phone (02) 9653 1036.

@@@@@

**Subject:** FW: Circuit FRENCH DIGITAL TOUR 2012

## **CIRCUIT FRENCH DIGITAL TOUR 2012**

**2012... News - a circuit, 4 judging, More than 150 awards and prizes... including 500,00€ for the best author of the circuit and a 100, 00€ for the best author of each salon.**

Dear Photo friends,

Invites you to enter the "7 th French Digital Tour, Circuit 2012". The exhibition has received FIAP Patronage, PSA Special Recognition (EID) -UPI License, ISF – and FPF Patronage. Preferential tariff for the clubs.

**Closing date 12st October 2012**

write down yourselves on the site. [http://www.frenchdigitaltour.org/crbst\\_37\\_en.html](http://www.frenchdigitaltour.org/crbst_37_en.html)

@@@@@

**We would like to extend an invitation  
to you and your members to take part in the**



**Sydney International  
Exhibition of Photography**

**is now accepting entries via our web site**

<http://www.siep.org.au>

@@@@@



## Tips

### Photo Finish

Thurs 8pm ABC1 TV. **Starts June 14.** Each week three keen photographers pit their skills against each other in a digital version of a shoot-out at the 'OK Corral'.

Each is given an assignment and a camera (one they may never have used before). In the first program each contestant is given a celebrity to shoot –

Actor Vince Colosimo, adventurer Dick Smith and entertainer Christa Hughes. This has the potential to be VERY interesting! Don't miss it!  
If you missed watching the first episode you can still see it via the internet. Go to: <http://www.abc.net.au/iview/>

### **What's a 'Pancake' lens?**

You may have heard this term in recent months. Forget opening up your CWA cookbook, you won't find the answer! "Pancake" lenses are flat, slim lenses usually of short to medium focal lengths (say 20mm-50mm). Panasonic uses them, so does Fuji and now Canon have joined the 'Pancake' party. The advantages of a 'Pancake' lens is that they are slim and unobtrusive and hence are really useful for people, travel and street photography. They don't intimidate your subject. 'Pancakes' are PRIME lenses (fixed focal lengths) and are therefore sharper, faster and lighter. Their larger apertures let more light through so you can use still faster shutter speeds and even sharper images. Canon users, check out your new 'Pancake' here: <http://snipurl.com/23xoh5n>

### **Flare**

Flare occurs when unwanted light hits the sensor. Flare causes a reduction in both contrast and colour saturation giving your image a 'washed-out' look. Flare also makes the image look less sharp. Flare occurs mainly in compacts without lens hoods when you point your camera more or less directly into the sun or a bright light. It also occurs in DSLRs if you don't use a lens hood. Lenses that are bulbous and project out of the lens casing are most vulnerable. iPhones with translucent plastic protection also suffer from flare. The solution is to use a lens hood wherever possible and avoid shooting directly into the sun. On the other hand, breaking this guideline every now and then could produce some amazing images!

### **Second Mouse Syndrome**

There is enormous pressure on manufacturers to produce newer, better models with a rack of quirky new features that detect smiles, plot your location with a GPS and give you the recipe for the scalloppine you've just shot! In the 'good old days' the new models were generally field tested and faults rectified because there were less time pressures. I suspect that manufacturers are now using initial purchasers to unwittingly field test their new products. Over the last year I've become aware of major design faults with well known camera brands and popular software applications. The faults are then rectified through firmware upgrades or repair and replacement. In the meantime the purchaser may have suffered significant loss of images and expended time. I think a reasonable argument can be developed for purchasing the second or third version of equipment or software or even a superseded model. It may not have all the latest bells and whistles but it may have had all the major problems sorted with better reliability and performance. An added bonus may be that the superseded model may cost significantly less. Sometimes, it's the second mouse that gets the cheese!

### **All your eggs in one basket**

In 2005 I bought a 1GB memory card in Bangkok. It cost \$956 on special. My 1GB card is now framed, hanging on the wall, a reminder that things change. I can now buy a 128GB card with a 1000X write speed for the same price I paid for my miniscule 1GB card. You can now do your month long European tour and never ever refuel! The danger is you have ALL your pixels in one card. If the camera is lost or stolen, or the card becomes corrupt you have lost the lot. A series of smaller cards 4GB, 8GB or 16GB spreads the risk and is a better option. Remember also that 4GB is the biggest size you can direct transfer to a DVD – food for thought! (Best brands SanDisk and Lexar)

### **Fake USB's on the Internet**

A year ago, a colleague of mine ordered a thousand USB thumb drives off the internet at a super low price. He intended to use them as 'give-aways' to promote his business. He's still waiting for them to arrive. Funny that! Another scam is reprogrammed and misrepresented thumb drives overstating their capacity and speed with glossy ads. Check some of them out here <http://bit.ly/LJhqYw>

### **Free alternatives to Photoshop and Lightroom**

Which is better – Photoshop or Lightroom? Should I be using Lightroom 3 or 4?

I can't afford Lightroom or Photoshop – are there any free alternatives?

Read all about it at:

<http://ow.ly/beJmD>

### **Top-end compact - Fuji X-Pro1**

The performance gap between high-end compacts and consumer-level DSLRs is rapidly narrowing . In some cases compacts are outperforming the DSLRs.

For travellers and street photographers attracted to smaller, lightweight cameras there are significant advantages. If you want to avoid the permanent pain in your neck by having a 3kg camera and tele lens permanently attached you might like to check out this beautifully crafted little retro.

I put the X-Pro1 and its three lenses through its paces for a week with some interesting and unusual results.

<http://fuji-wildheart.blogspot.com.au/>

### **DxO labs**

DxOMark is an independent imaging lab that tests sensors and lenses. According to its recent tests on the Nikon D800 the sensor outperformed all other DSLR sensors,

including Nikon's flagship D4 and the entire medium format field including the fabled Phase One IQ180.

2002 Canon 1Ds scored 63

2007 Nikon D3 and Canon 1Ds Mk 3 both scored 80

2012 Nikon D4 scored 89

2012 Phase One IQ180 scored 91

2012 Nikon D800 scored 95

Read more at <http://www.dxomark.com/>

### **Frozen Planet (DVD)**

If you're considering visiting Antarctica or the Arctic, viewing this DVD would be a great preparation and motivator. The landmark, six-part series from the BBC's world renowned Natural History Unit brings to the screen the frozen wildernesses of the Arctic and Antarctic.

The series is a follow up to Planet Earth. Presented by David Attenborough, cover image by Daisy Gilardini. Daisy and I shared time in Antarctica last year. Fabulous Nikon wildlife photographer and a lovely lady to boot. If you ever get a chance to journey with Daisy grab it with both tripods.

For information and ordering the DVD:

<http://shop.abc.net.au/products/frozen-planet-3dvd>



### **Fifty Stunning Portraits**

Where do ideas and inspiration come from for achieving remarkable images? How do we mentally prepare ourselves to avoid taking

conventional, predictable, perhaps even boring images. Different photographers have different strategies. Looking at and being

inspired by other other people's images is one way to fire up your imagination.

<http://bit.ly/dMN26A>

### **New York**





Lidia is a work in progress. For over a decade Lidia's images have undergone a transformation, from travel enthusiast to a photographer with an observant eye,

a love for people and the sharp-shooting skills of a modern day Annie Oakley.

Lidia's passion extends to doing something lasting with her finest. For a number of years she has applied her sensitive and artistic skills to book design and

New York is a fine example of her craft.

<http://bit.ly/Lk5HIQ>

#### Twitter

If you want to follow photography news and tips on a more regular basis

<http://twitter.com/#!/DaleNeill>

#### Panasonic Lumix GF1 for sale

A well-loved Panasonic Lumix GF1 with 20mm pancake lens plus a super zoom - Olympus M.Zuiko 14-150mm lens with UV filter and flower lens hood attached.

Plus an Optec black soft case all in tip top condition and working perfectly.

A really light unobtrusive travel camera. \$500. Contact Abigail Harman on 0417 874 619.

@@@@



## Special Talk by Pearl Goldman June 17th 2pm

### 'Memories of a Model for Norman Lindsay'

Born in 1919 to Gertrude and Joseph Schweig. Pearl came to Norman's notice in 1937, after winning the Miss Bondi Surf Queen contest. Pearl had been modeling for some time in various department stores, had been a show girl and appeared as an extra in some Australian movies and television 'soapies'.

She posed for Lindsay for five years from 1938-1945, never revealing the fact to her parents.

Following the death of her first husband, Maurice Copolov, Pearl went to America where she met and married Sydney Goldman, Vice President of Radio City Hall.

Pearl currently lives on the Gold Coast of Queensland. She has very fond memories of her time modeling for Lindsay, saying he opened up a new world to her, as he chatted away while he worked - talking about art, his travels and railing against the 'wowers' who were attacking his work.

[Read more information about the talk by Pearl Goldman](#)



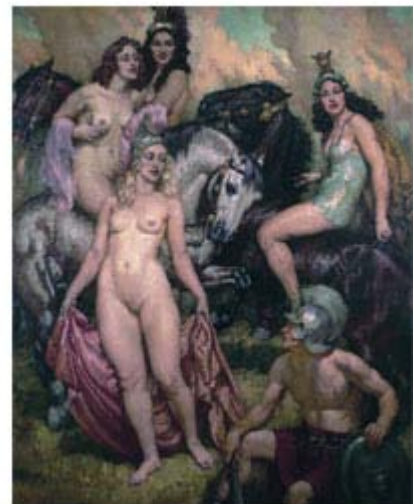
### 'The Models of Norman Lindsay'

A New Exhibition till August 30th 2012

When Norman moved to his studio at 12 Bridge Street in 1934 he began to paint seriously in oils. The city studio meant he had access to a great number of models. He paid five shillings an hour which was a considerable sum during the Depression. He never turned models away and even if they didn't suit he would make enough sketches to be worth the pay.

A special diary with the names and descriptions of models lists a total of 130 models.

'The Models' exhibition focuses on five of Lindsay's favourite models – **Rose, Pearl, Rita, Phyllis** and **James**. It features a stunning and insightful history into this time in history with photographs, studies, paintings, letters and even Rita Lee's dress from **Rita of the 90's**.



[Read more on The Models of Norman Lindsay exhibition](#)

### New Print Release

Size 20.5cm x 29cm

Printed on Norman Lindsay's original press by Master Printmaker Andrew Totman.

Pen and Ink illustration from Micomicana by Norman Lindsay c.1940

Edition: 125 (100 only for sale)

PRICE: \$275 each

Orders being taken from 1st April 2012

Email: [info@normanlindsay.com.au](mailto:info@normanlindsay.com.au) to request an order form.



### Jazz and Wine Festival Thank you!

Thank you to all our Volunteers and Friends who made our annual Jazz and Wine Festival such a big success.



It was a beautiful afternoon with around 500 visitors attending.

We raised approximately \$5,000 for conservation and projects at the Norman Lindsay Gallery.

## Norman Lindsay Painting Studio

Work to start soon on Lindsay's Painting Studio!

In addition to the public appeal, the National Trust have received a grant to go towards the restoration of the Painting Studio under the 'Community Building Partnership program' and work is due to begin shortly.

The Painting studio was built in 1918 and is considered highly culturally significant. It is a rare example of an artist's studio and was in continued use until the 1960s. This space allowed Lindsay freedom from distraction and was where his enormous output of paintings was created.



As well as what he considered his serious art, Lindsay also found time for the diversion of making ship models and when there wasn't enough light to paint by, he would write his books at night.

The Painting studio was also where Lindsay entertained his favourite guests with readings from his latest writings.

Restoration work will include:

- Repairs to the underpinning and stabilisation of piers and footings
- Repairs to the stucco walls and external and internal painting
- Minor drainage improvements
- Repairs to the under floor timber structure
- Restoration of the original ornate fireplace surround
- Conservation of the unfinished oil painting usually on display on the large easel.

This work will enable visitors to continue to view the studio and appreciate Lindsay's legacy for many years to come.

Some work to the **Siren bench** at the end of the hedge walkway is also planned and the hedge has had a major pruning to restore its correct shape.

## 'Lindsays from the Howard Hinton Collection' Exhibition

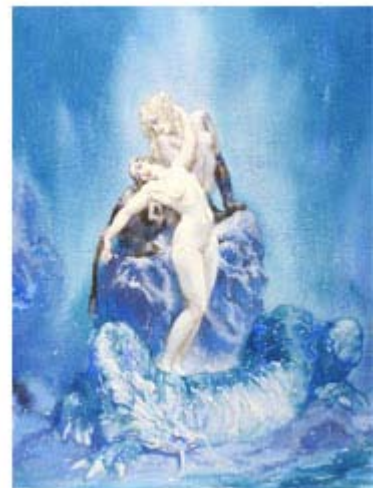
This special exhibition will be on show from September 2012.

16 Norman Lindsay works from The Howard Hinton collection at New England Regional Art Gallery will be on loan for the first time to the Norman Lindsay Gallery.

DON'T MISS IT!

## New Merchandise

The Norman Lindsay Gallery has the following new Merchandise available. This will also be for sale on our website soon.



### **Rose Lindsay Cushion Cover**

These replica printed linen cushion covers have piping around the edges. Rose Lindsay did this embroidery in the 1930s but it was never made into a cushion cover. Cost \$60 cover only \$70 with filling.

### **Rose Lindsay Round Cosmetic Mirror**

Round cosmetic mirror for your purse featuring the embroidery from the cushion cover. Cost \$7.95.

### **Greeting Card**

Featuring detail from Rose Lindsay's wool embroidered Jacket Cost \$4.50 w/envelope

**Scarf**

Black or white scarf with details from Rose Lindsay's wool embroidered jacket. Black scarf is silk georgette. White is a cotton blend Cost \$95. Boxed.

**Other Upcoming Events**

**Friends of NLG AGM**

The Friends of Norman Lindsay Gallery Annual General Meeting will be held on Sat the 23rd June at 3pm for anyone who would like to attend.

**Another Special talk for The Models Exhibition**

On the 23rd June, Marguerite Young (Rita Lee's daughter) will be talking about her mother's modeling days. Time 2pm. (Call for details)

**Share Our Newsletter**



# Snapshot 2012

## Teenagers International Photographic Competition Penrith Regional Gallery & The Lewers Bequest

Penrith Regional Gallery  
& The Lewers Bequest  
86 River Rd, Emu Plains NSW 2750  
p: 4735 1100  
e: gallery@penrithcity.nsw.gov.au  
w: penrithregionalgallery.org

Ages: Junior (13 – 15 yrs) and Senior (16 – 19 yrs)

Photos: One photo only. Choose your own subject.

How To Enter: IT'S FREE. Go to [www.penrithregionalgallery.org](http://www.penrithregionalgallery.org) and follow the Snapshot link to upload your photo to the Gallery website. Be sure to follow the file size instructions.

Entries close: Wednesday 15 August 2012

Prizes: Twelve winners will share in \$1400 of prize money.

Judging and exhibition: 300 photos will be selected from the uploaded entries for final judging and inclusion in Penrith Regional Gallery's Snapshot 2012 exhibition. Prize winners will be announced at the exhibition opening on Saturday 22 September 2012, 5 – 7pm.

### More Snapshot 2012 opportunities

**Snapshot Photographic Workshops with Leading Industry Professionals**  
For Year 10 & 11 students  
15 – 19 October  
Photojournalism, fashion photography, photographic portraiture and photo media.  
Details: [www.penrithregionalgallery.org](http://www.penrithregionalgallery.org)

**Snapshot Photographic Enrichment Workshops**  
For Year 5 – 9 students  
5 – 9 November  
Work with an experienced photography teacher and a range of photographic 'set-ups' to create dynamic images using your digital camera.  
Cost: \$50  
Bookings: [gallery@penrithcity.nsw.gov.au](mailto:gallery@penrithcity.nsw.gov.au)

**Team Snapshot**  
For Year 10 & 11 students  
Join the Team Snapshot Teenage Event Management Committee. Gain experience in event management, marketing and exhibition development as you work, under the guidance of gallery staff, on the Snapshot 2012 marketing plan, flyers, social media and opening event.  
For further details contact:  
[rmccarthy@penrithcity.nsw.gov.au](mailto:rmccarthy@penrithcity.nsw.gov.au)  
or 4735 1100

**Work Experience Placements – Snapshot 2012 Exhibition Install**  
17 – 19 September  
The Gallery is offering two work experience placements to assist in the installation of Snapshot 2012. Students must submit a brief CV with two phone referees. Applications accepted from 27 July - 17 August.  
For further details or to apply contact:  
[rmccarthy@penrithcity.nsw.gov.au](mailto:rmccarthy@penrithcity.nsw.gov.au)  
or 4735 1100

left: 2011 entry by Lauren Eardley, Oxford, UK.  
right: 2011 entry by Rebecca Rayner, Glenmore Park, Australia



# Snapshot 2012

Teenagers International  
Photographic Competition

Penrith Regional Gallery  
& The Lewers Bequest



Upload your photo at  
[www.penrithregionalgallery.org](http://www.penrithregionalgallery.org)



Dimity Mullane

Marketing and Media

---

@@@@@

***Majestic Clydesdales for Photographs.  
Located at the world-class Sebel Resort & Spa, Hawkesbury  
Valley***



*Looking for a **UNIQUE** idea  
for your Clients?*



### **Quick Links**

[Our Website](#)

[Follow us on Facebook](#)



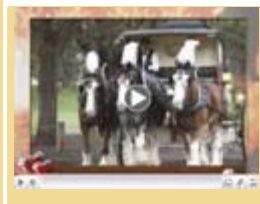
### **Wedding Photos / Family Portraits / Formal Photos / Engagement Portraits**



Prices for photos within the grounds of the Sebel Resort are:

\$330 (1 horse/1-2 hours) and \$165 per horse thereafter (inclusive of GST).

If another location is preferred, please call us for a quote, as transportation costs incur an additional fee.



[View our Weddings Slideshow](#)

***For those looking for Horse Drawn Transport, we do also have our grand 1890's Omnibus, (seating 8 guests) available for:***

***\* Bridal Party Photo Tours (designed to suit Hawkesbury Weddings)***

Love & marriage go together like a horse and carriage... but did you know that a very budget-friendly option for Weddings, Formals and Family portraits nowadays is to have JUST the horse (of course!)

***Horses are located ON-SITE at the picturesque Sebel Resort & Spa***

*\* Formals and other special occasions.*

*Please view our website for further details.*



[View our TV Segment](#)



Our team of horses (& carriage) are located ON-SITE at the luxurious Sebel Resort & Spa where Lakeside or Rural back-drops are available - providing the perfect setting for some amazingly unique and beautiful photo opportunities.

*We have one, two or three immaculately groomed and well-behaved horses available for this purpose.*

This service is not limited to the Sebel Resort, as we are able to transport our horses to any area within the Sydney Metro area, including the Blue Mountains and beyond!

*A True Touch of Class*

*Tel: 02 4577 4544*

Send us an Email: [info@clydesdalesrestaurant.com.au](mailto:info@clydesdalesrestaurant.com.au)

[www.clydesdalesrestaurant.com.au](http://www.clydesdalesrestaurant.com.au)

@@@@@

**Subject:** re SugarLove Masterclass/SONY Ambassador Bradley Patrick

Dear Doug

We would love to share some information to all members of the Hawkesbury Camera Club regarding our inaugural Masterclass event with SONY Ambassador/Celebrity Portrait Photographer Bradley Patrick. We are thrilled to have the support of Sony, Profoto/L&P Photographics, AIPP & ACMP in what will be an inspiring insight into Bradley's work within not only the Arts/Entertainment industries but also throughout Weddings/Events, Editorial and Advertising photography.

The Masterclass Photography weekend will take place at the Royal Automobile Club of Australia on Macquarie Street in Sydney from July 7-8th with an opening night red carpet event on Friday 6th July. This will provide the perfect opportunity for all participants to meet & celebrate along with members of the photographic industry, invited VIP guests and media.

I have attached a PDF document on the Masterclass for you to review and pass onto members.

We are happy to extend the AIPP / Industry member rate of \$695 inc gst to anyone wishing to attend / student rate \$495 inc gst also available

For more information you can also visit our official website here at; [www.sugarlovemasterclass.com](http://www.sugarlovemasterclass.com)

Look forward to talking further, regards Leigh

Leigh Taylor  
Managing Director

SUGARLOVE PICTURES  
27 Moncur Street Woollahra NSW 2025  
P: + 61 2 9360 1127  
M: (0412) 579 944  
[www.sugarlovepictures.com](http://www.sugarlovepictures.com)  
[www.bradleypatrick.com](http://www.bradleypatrick.com)  
  
[www.sugarlovemasterclass.com](http://www.sugarlovemasterclass.com)

.....  
Think before you print. This message is intended for the addressee named and may contain confidential information. If you are not the intended recipient, please delete it and notify the sender. Views expressed in this message are those of the individual sender and not necessarily the views of the business.  
.....