

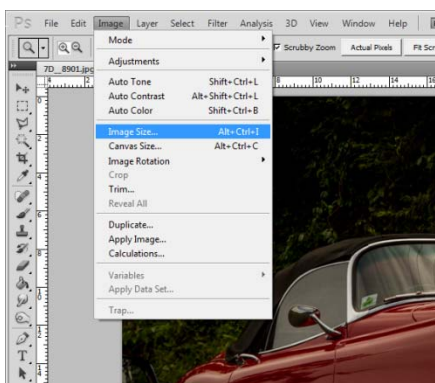
# Resizing your photographs

... in preparation for competition entries or suitable for displaying on the web

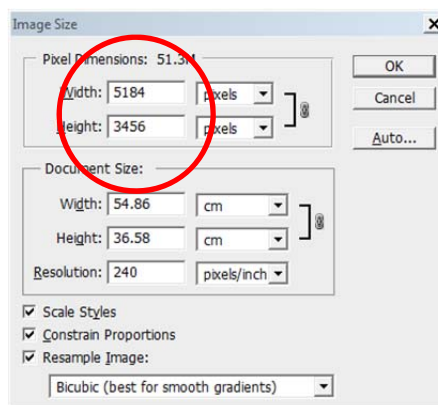
[Notes from Jonathan Auld as presented to the Hawkesbury Camera Club in March 2014]

1. Open you photo in Photoshop
2. Adjust the image size

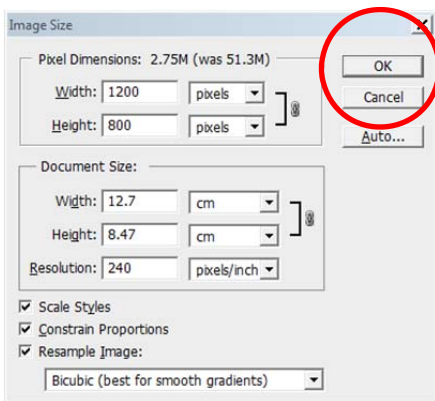
In Photoshop this is achieved by clicking on the Image tab, then selection Image Size from the drop-down menu. Note: The Photoshop shortcut for this menu item is **Alt+Ctrl+I**



Adjust the Pixel Dimension to the required Width and/or Height...in this example we wish to resize the photograph to 1200 pixels on the longest dimension

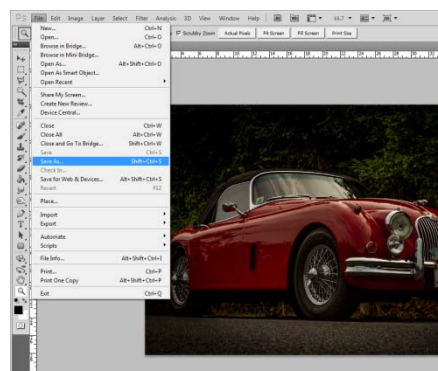


Click the OK button

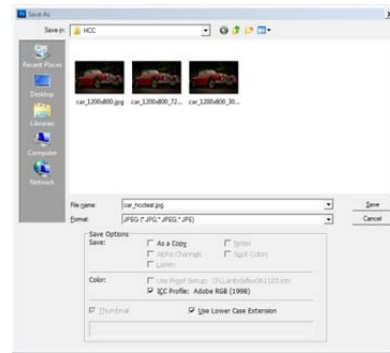
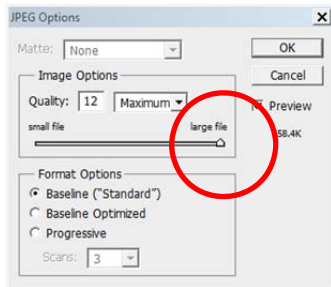


3. Save the file

In Photoshop this is achieved by clicking on the File tab, then selecting Save As from the drop-down menu. Note: The Photoshop shortcut for this menu item is **Shift+Ctrl+S**



- Give your photo a name in the File name field
- Select JPEG as the file format
- Then click on the Save Button



Keep the image quality on the highest possible setting, with Photoshop this is 12 (note that some program scales only go to 10 – either way select the highest)

### *Wait a minute...I don't have Photoshop – What can I use to resize my images?*

Don't have Photoshop and are looking for a free alternative? Try one of the following:

- Fotosizer (PC)- <http://www.fotosizer.com/>
- iResize (MAC) - <http://www.macupdate.com/app/mac/13039/iresize>
- FastStone (PC) Image Viewer / Photo Resizer - <http://www.faststone.org/>

## *What are the requirements for HCC competitions?*

Detailed requirement for the Hawkesbury Camera Club competitions are kept up to date on the club's website at [http://www.hawkesburycameraclub.com.au/competition\\_rules.php](http://www.hawkesburycameraclub.com.au/competition_rules.php)

At the time of writing this article, the club's projector can display an image of 1280 x 800 pixels (WXGA). Therefore the maximum pixel width for entries will be 1280 and the maximum pixel height will be 800 pixels.

Example 1: Photographs of portrait orientation submitted into one of the two projected categories would be resized to 800 pixels on the longest side (height)

Example 2: A panoramic photograph would get resized to 1280 on the longest side (width)

Example 3: Most photographs of landscape orientation, straight out of the camera with no cropping, will most likely end up being 1200 x 800 pixels when resized

## *Filename requirements for HCC competitions*

Images are to be labelled accordingly:

1. category – Colour or Monochrome (C or M)
2. entrant's grade (A or B)
3. two digit year of comp (ie. 14 for 2014)
4. two digit month of comp (ie. 05 for May)
5. sequence number of entry in category (1 or 2)
6. entrant's name

Example: A-grade photographer Ian Cambourne has two entries he would like to submit in the May 2014 Projected Colour competition. On the night of the competition, Ian submits the following two images to the Competition Manager which are saved onto a USB stick:

CA14051IanC.jpg

CA14052IanC.jpg

## *Is there anything else I should know about HCC competitions?*

Images are to be supplied on a USB memory stick to be delivered to the projectionist between 7pm & 7.30pm

What happen if I can't make the competition night?

Submit your entries via email to the Competition Manager

[competitionmanager@hawkesburycameraclub.com.au](mailto:competitionmanager@hawkesburycameraclub.com.au)

...a minimum of 24 hours before the competition.